

Uniclass L5214	
Cl/SfB (43)	Se5

August 2008

Riverstone® Architectural Stone

Product profile

SSQ Riverstone architectural stone is a range of premium-quality, natural rock products that have been specifically cut and dressed for architectural use. The physical and aesthetic properties of the rock make it an ideal choice of material for flooring, paving, cladding and stairways.

Riverstone is a phyllite, a metamorphic rock similar to slate, sharing its essential characteristics but surpassing its qualities: it is stronger than slate, more resilient and its mineral content gives it an eye-catching colour and appearance. It is particularly suited for flooring and stair treads as, in its natural finish, its riven surface provides excellent slip resistance in wet conditions, a vital consideration in these areas.

Riverstone is mined exclusively at SSQ's La Florida Quarry in the San Luis region of central Argentina, an area in which its versatility has made it a prized building material for centuries.

SSQ Riverstone architectural stone has been tested in accordance with EN 12057 and EN 12058 and carries a CE marking.*

* Certificates and test reports are available on request.

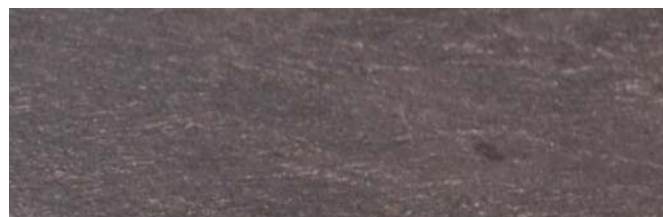
Appearance

Phyllite is a naturally beautiful rock; its grey-green colour being enhanced by its natural mica content which gives it a subtle metallic sheen, the brilliant veins of quartz it often contains adding lightning-streak drama to its appearance.

SSQ Riverstone architectural stone is available in four finishes – Brushed Antique, Flamed, Natural Split and Honed – which highlight the rock's physical attributes and aesthetic qualities.



Brushed Antique



Brushing softens the texture of the riven surface caused by splitting the rock along its natural line of cleavage to give a smooth finish but one that retains its benefits.

Flamed



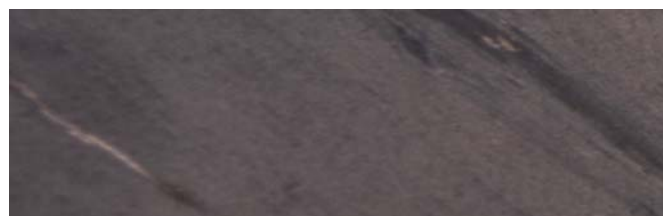
A high-temperature flame reduces the roughness of the riven surface to leave a highly textured finish but with a natural look and feel. Improving on nature's work is a skilled task and produces an aspirational product.

Natural Split



The rough surface caused by splitting the rock along its natural line of cleavage is ideal for areas needing a high level of slip resistance.

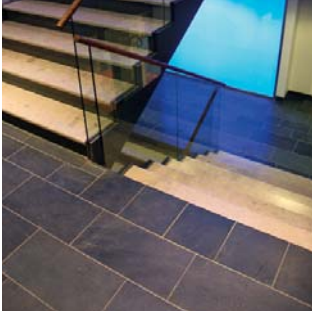
Honed



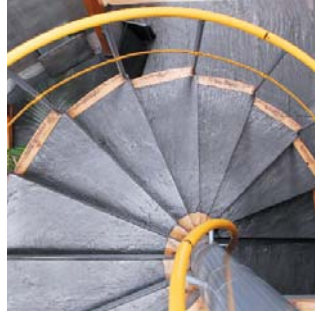
Honing the rock's surface removes the riven finish to give a smooth, flat surface. It also darkens the surface of the rock to a gunmetal-grey colour and enhances the veining making it ideal for use as floor or wall tiles, a dramatic feature panel or a highly desirable work surface.

Versatility

SSQ Riverstone architectural stone offers architects and interior designers a practical and highly desirable material that can be used in many ways including:



Flooring



Stairways



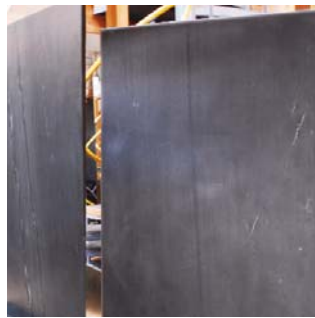
Paving



Paddlestones



Cladding



Slabs



Mosaics



Artistic features



Crazy paving



Rustic walling

Custom sizes

Although SSQ Riverstone architectural stone is available in a range of off-the-shelf sizes, it can also be provided to meet a project's unique specification.

Please contact us for further information; we will be delighted to discuss your requirements and help you develop your ideas.