



Mat.-Nr. 126425 Änd.-St. 00
Zeichn.-Nr. 20522-9-0966

GEZE GmbH
P.O.Box 1363
71226 Leonberg

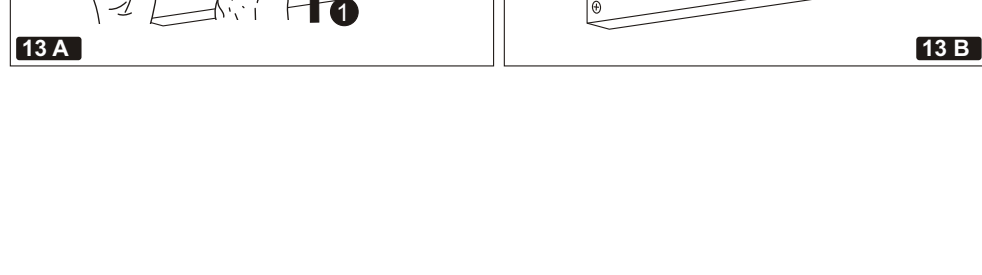
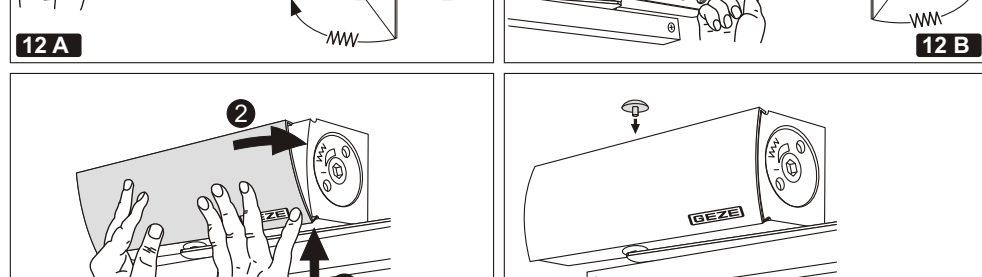
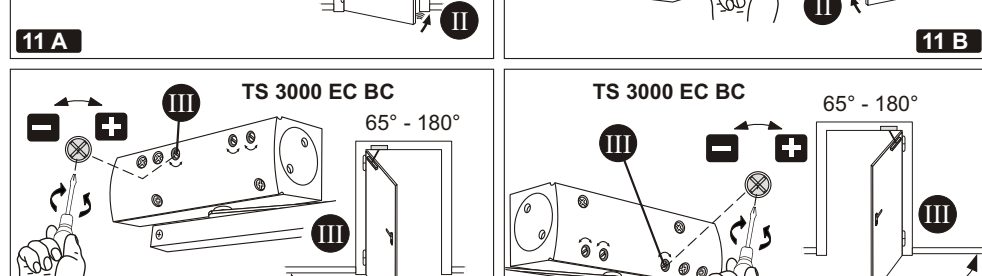
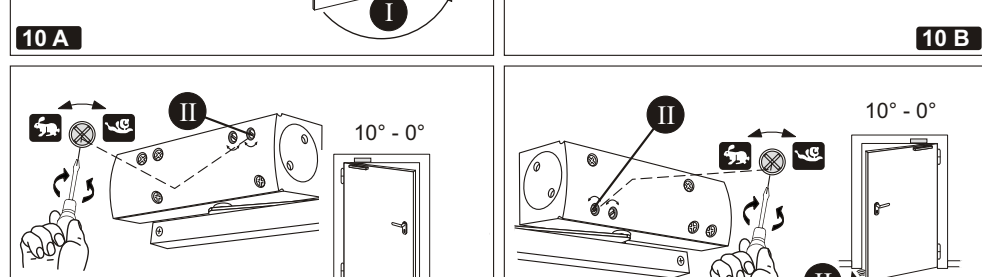
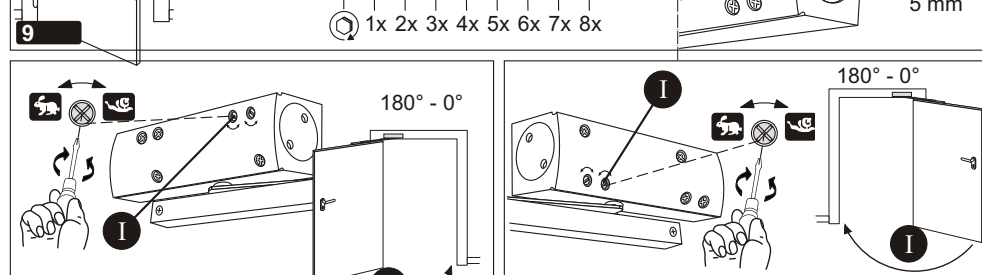
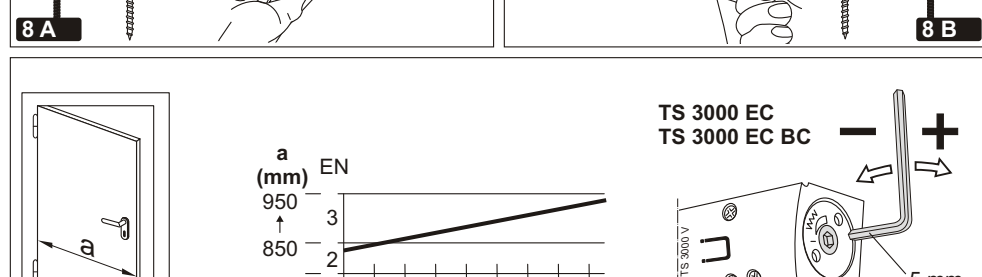
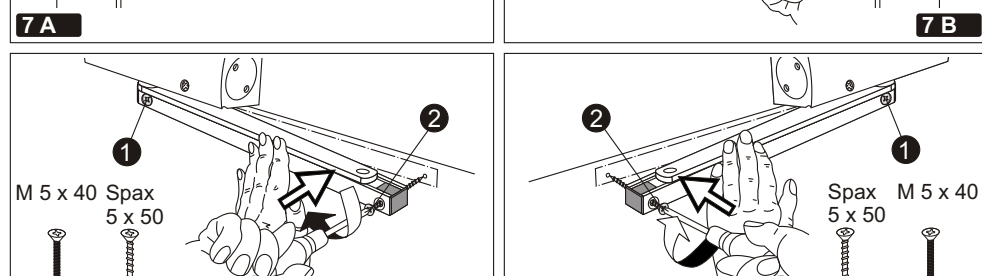
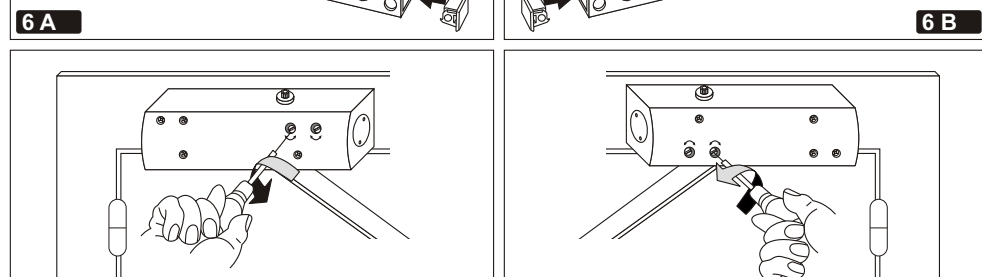
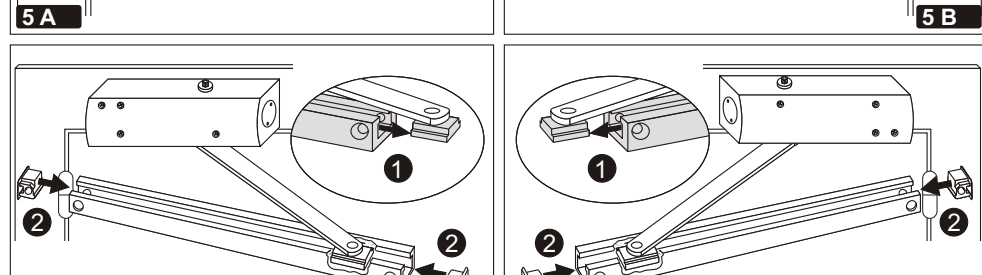
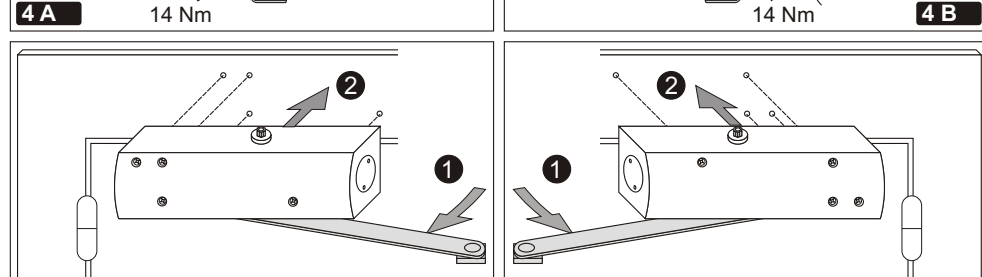
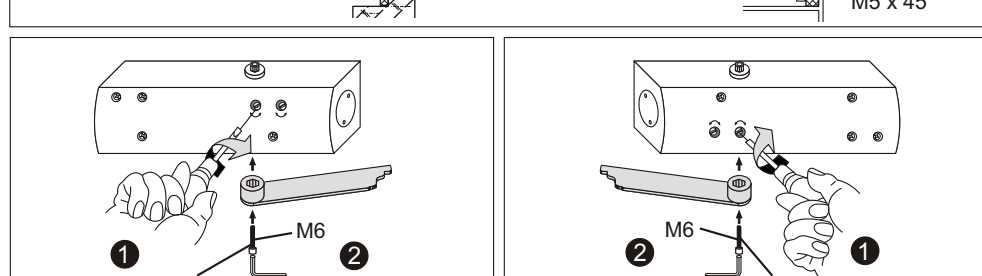
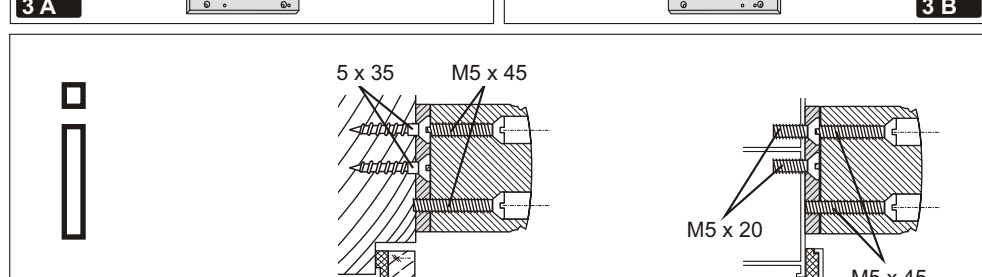
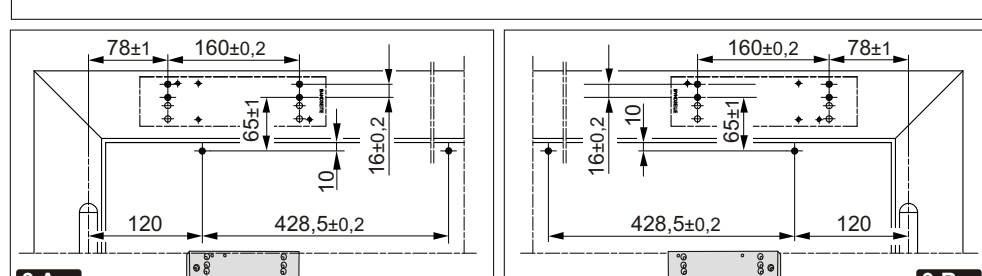
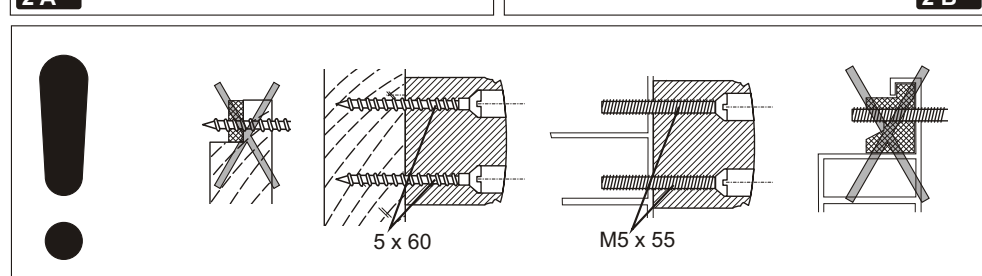
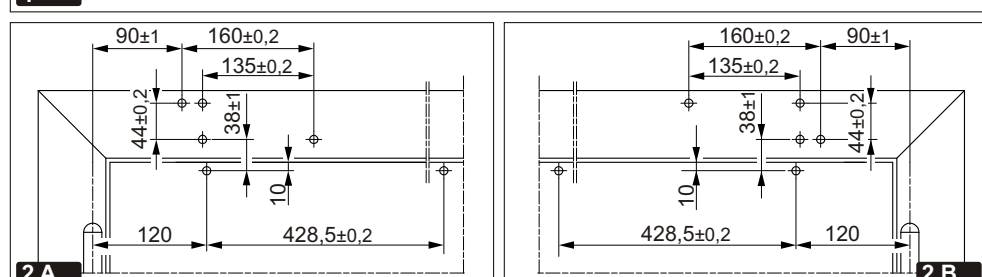
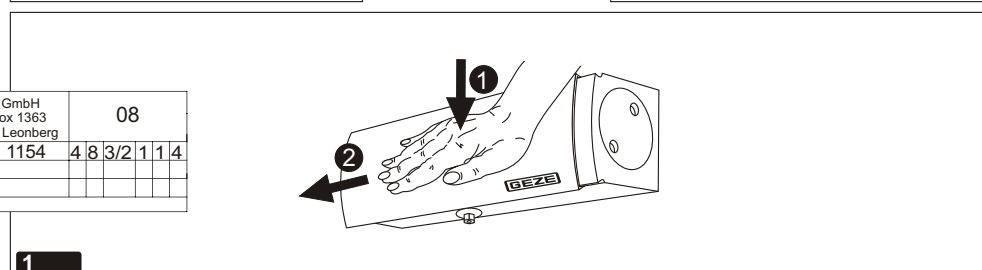
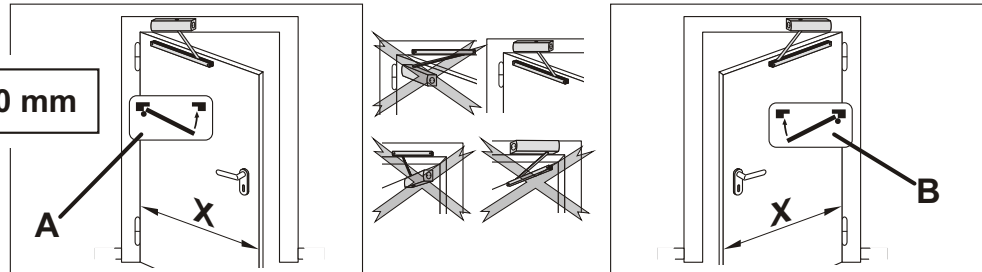
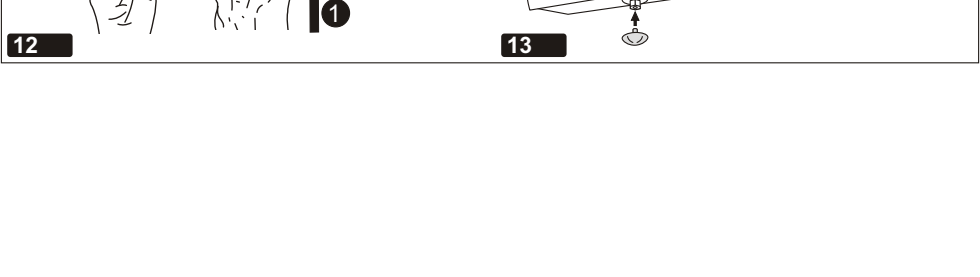
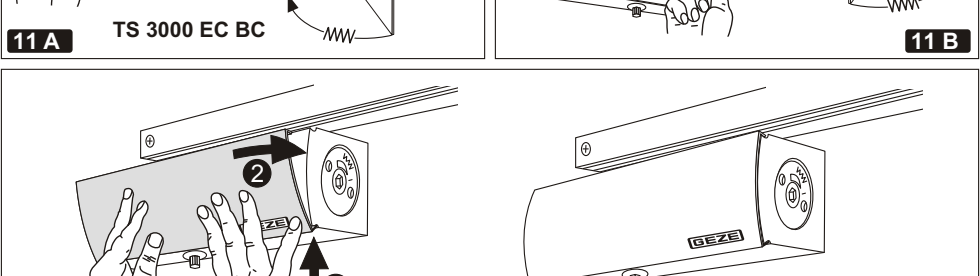
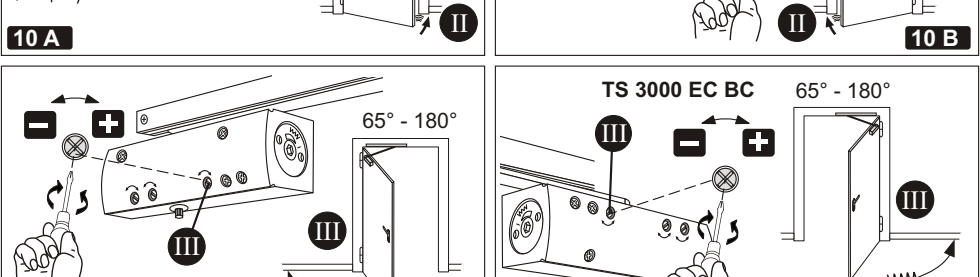
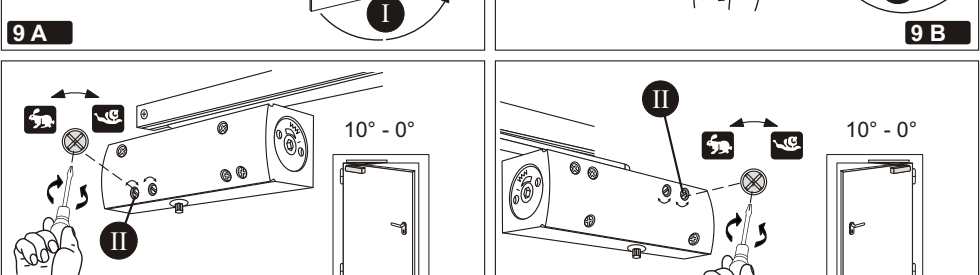
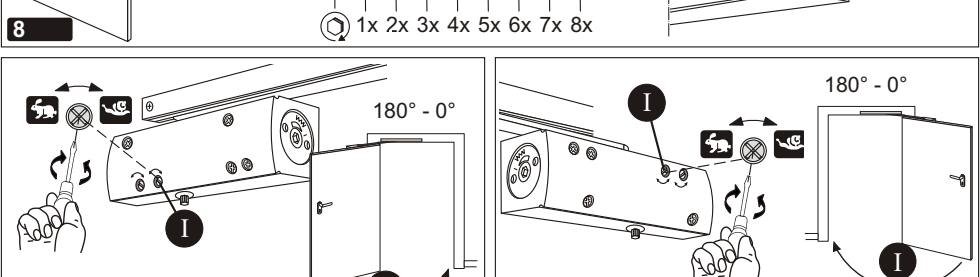
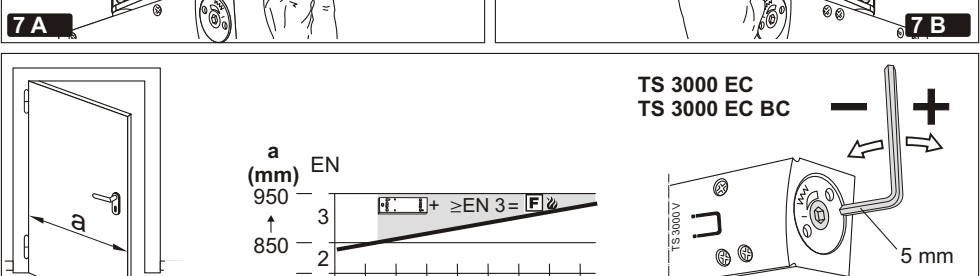
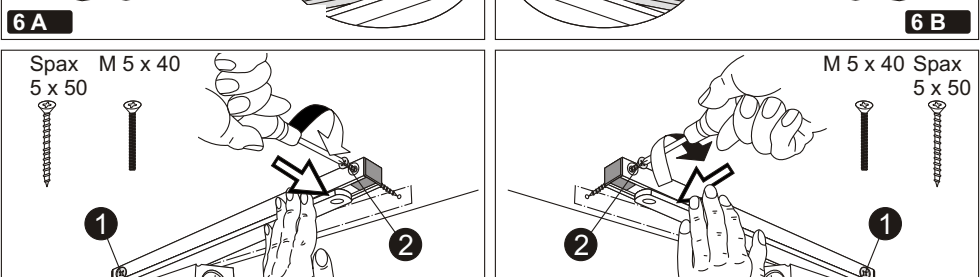
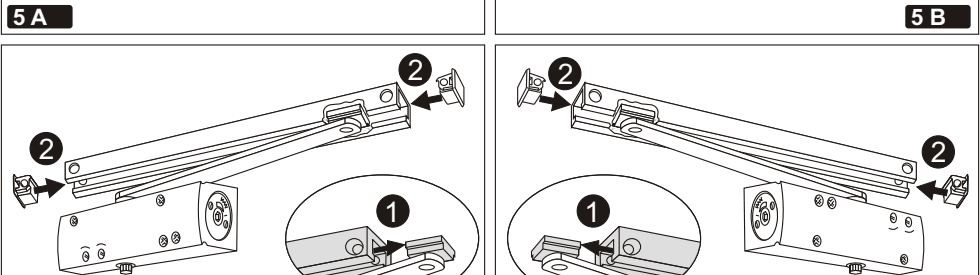
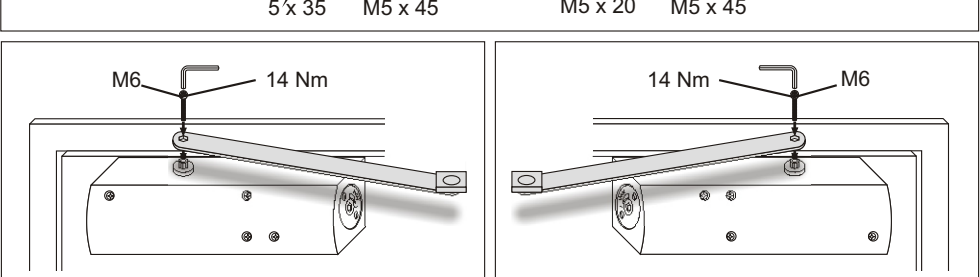
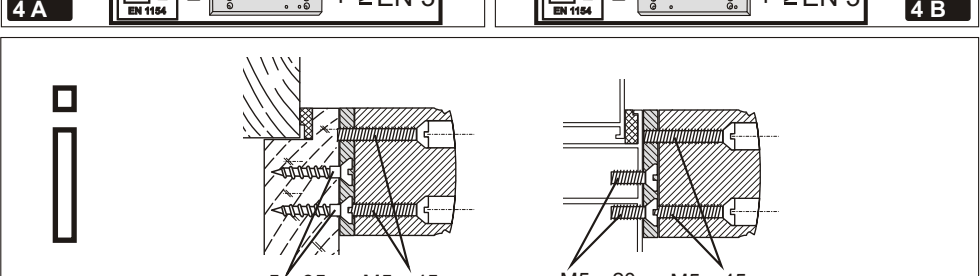
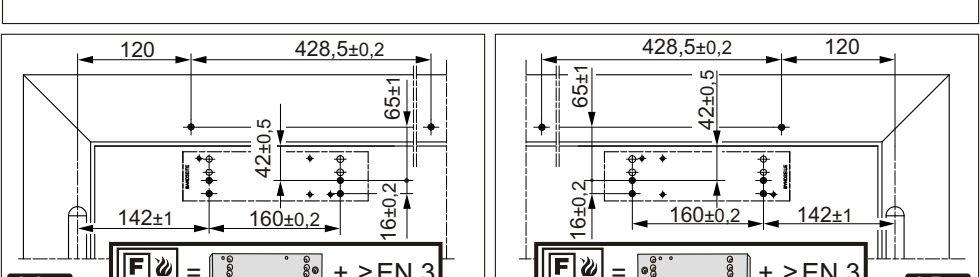
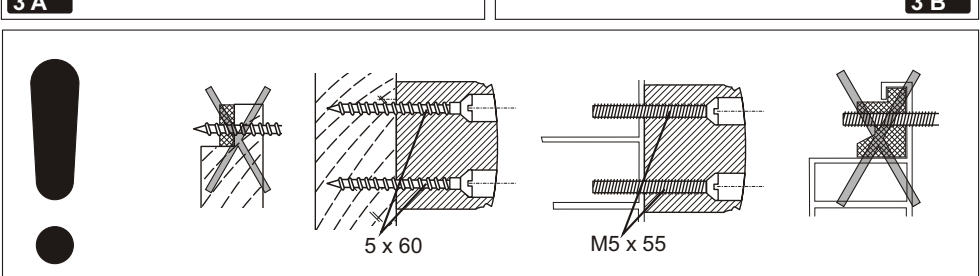
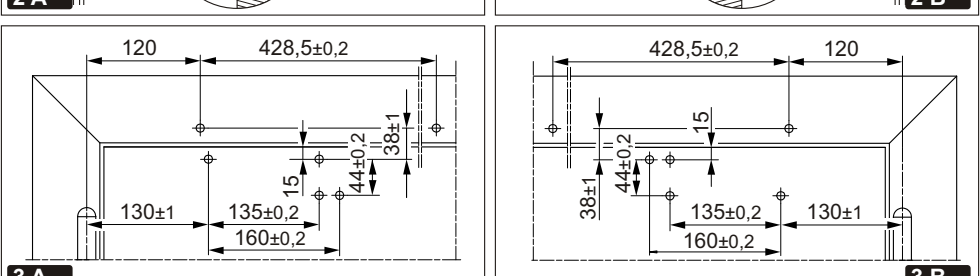
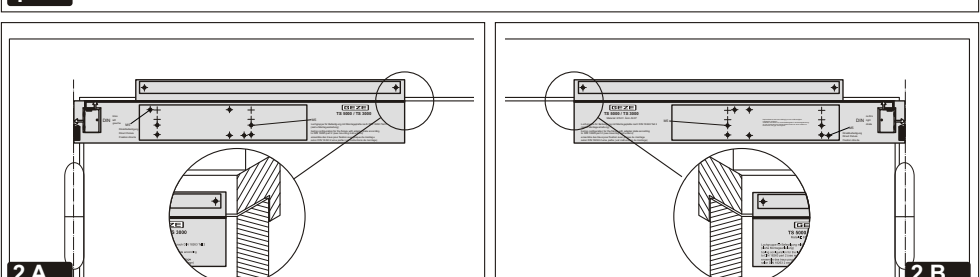
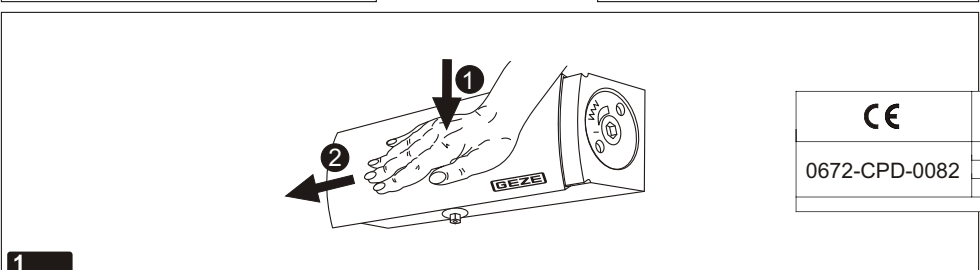
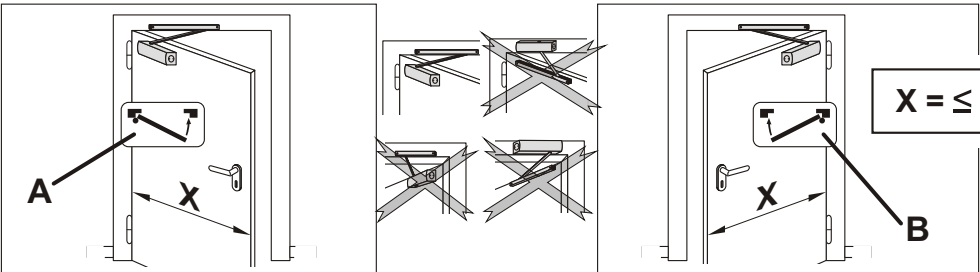
Tel.: +49(0)7152 203-0
Fax: +49(0)7152 203-10

GEZE GmbH
Reinhold-Vöster-Str.21-29
71229 Leonberg
Germany

www.geze.com

TS 3000 EC / TS 3000 EC BC

Montageanleitung / Mounting Instruction





GEZE GmbH
P.O.Box 1363
71226 Leonberg

Tel.: +49(0)7152 203-0
Fax: +49(0)7152 203-10

GEZE GmbH
Reinhold-Vöster-Str.21-29
71229 Leonberg
Germany

www.geze.com

Mat.-Nr. 126425 Änd.-St. 00
Zeichn.-Nr. 20522-9-0966

TS 3000 EC / TS 3000 EC BC

Montageanleitung / Mounting Instruction

